



PROJECTWAY

Company Profile

www.projectway.co.za

TABLE OF CONTENTS

WHO ARE WE	2
SERVICES	4
OUR APPROACH TO PROJECTS	9
INTEGRATION WITH CLIENT ORGANISATION	11
PROJECTS	13
POLICIES	15
OUR TEAM AND EXPERIENCE	16

WHO ARE WE

Since its establishment in July 2000 ProjectWay Consulting and Contracting (ProjectWay) has developed into a specialised and respected provider of project management services to various industries. Clientele includes some of South Africa's leading blue-chip organisations with work spanning across 5 countries. ProjectWay has developed an established project management approach to accommodate and manage unique requirements for any project. Additionally, we are also a major stakeholder in the majority black-owned firm Consortia Solutions.



EXTENSIVE EXPERIENCE IN THE FOLLOWING INDUSTRIES:

- Mining
- Social Sector
- Water
- Telecommunications
- Agricultural
- Industrial
- Automotive
- Energy
- Built Environment
- Health Care

AWARDS, CERTIFICATIONS & MEMBERSHIPS:

- Project Management South Africa (PMSA)
- Association of Project Management South Africa (APMSA)
- Project Management Institute (PMI)
- Engineering Council of South Africa (ECSA)
- B-BBEE Level 4 accreditation
- Project Excellence Award from PMSA
- Consortia Solutions B-BBEE Level 2 accreditation

WHO ARE WE

OUR VISION

To be synonymous with excellence in overall project delivery.

OUR MISSION

TO IMPROVE OVERALL PROJECT PERFORMANCE THROUGH:

- Critically applying sound project management principles in our day-to-day activities.
- Applying new and improved tools and techniques to continuously improve our ability to deliver projects.
- Searching and developing project management talent towards project management excellence.
- Providing an entrepreneurial environment where individuals can live their passion for project management.
- Develop our global network of project management expertise.
- Provide a home for project management development.



SERVICES

PROJECT DEVELOPMENT AND IMPLEMENTATION (IN ASSOCIATION)

- Project framing and definition.
- Development of detailed project plans.
- Establishment of a project team.
- Managing the professional team, consultants, suppliers and contractors.
- Establishing functional roles and responsibilities with respect to the client and contractor organisations.
- Management of the procurement process and drafting of contracts.
- Project scheduling and time management.
- Cost control.
- Project meetings and reports.
- Client liaising.
- Overall scope control and deviation management.
- Project commissioning and handover.
- Project close-out.



PROJECT SUPPORT SERVICES

- Project Office design, implementation and operation
- Project reporting and administration services
- Project guideline/manual development
- Planning and scheduling

COST ENGINEERING AND CONTROL

- Establish cost baseline
- Cash flow management
- Payment certification
- Change control

QUANTITY SURVEYING

- Cost estimation
- Re-measurement and certification

ENGINEERING MANAGEMENT

- Engineering discipline coordination and integration:
 - Architectural
 - Civil and structural
 - Mechanical
 - Electrical
 - Instrumentation

HEALTH, SAFETY AND ENVIRONMENT

- Safety management
- Safety Agent function
- Environmental control and management of project sites

QUALITY MANAGEMENT

- Establish quality parameters
- Review and approval of Contractor Quality Control Plans
- Inspection and handover management

PROJECT GOVERNANCE, AUDITS AND REVIEWS

- Establishment of project governance structures, principles and protocols.
- Establish project governance mandate, responsibilities, authorities and work method.
- Project audits covering all knowledge areas of project management.
- Conducting phase stage (gate) reviews.
- Conducting project risk reviews.
- Project plan reviews.
- Facilitate technical, HAZOP & financial reviews.

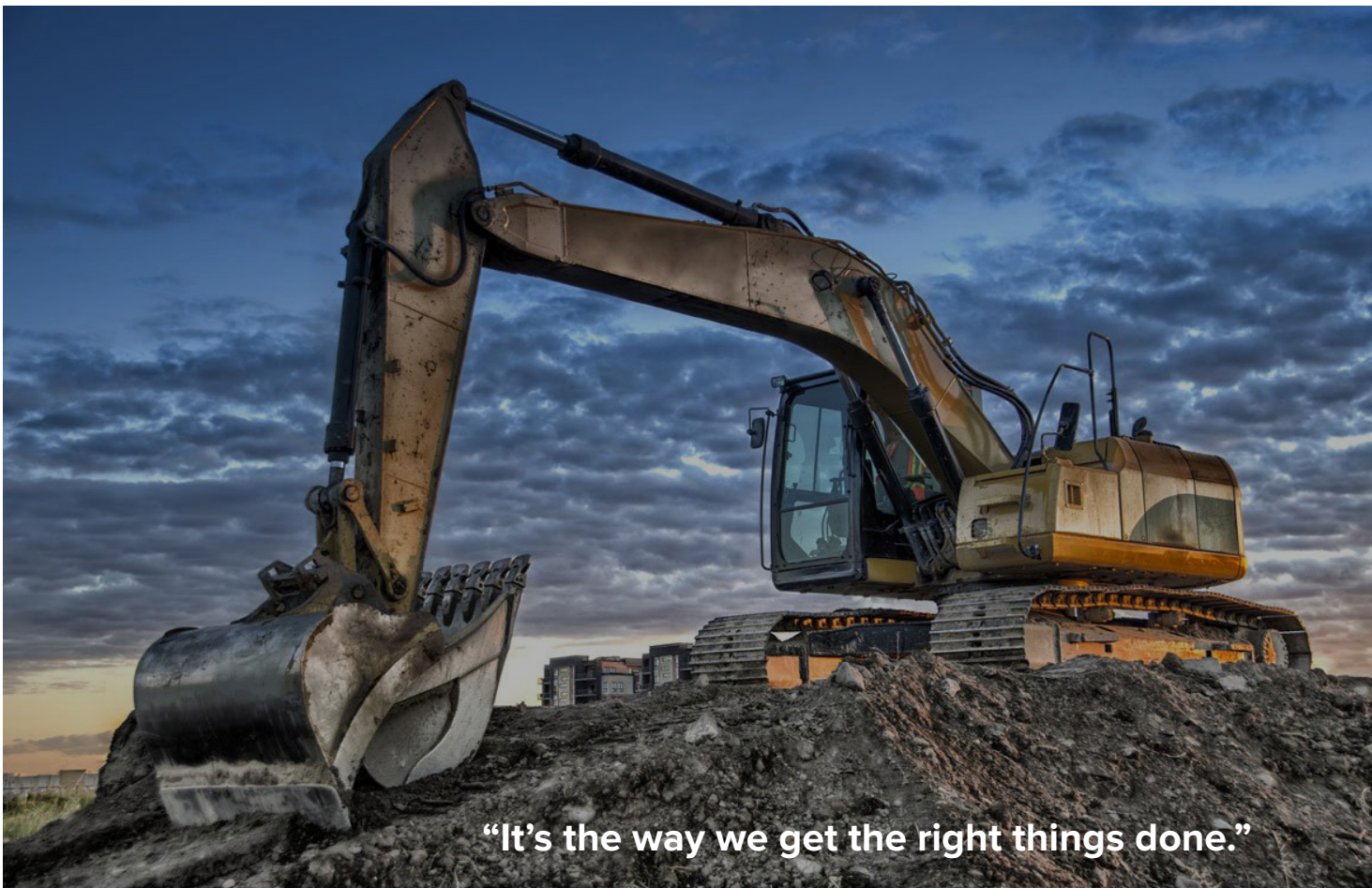
PROJECT MANAGEMENT TRAINING

Various training courses are presented through one of South Africa's largest and most respected tertiary institutions, ensuring adherence to SAQA and NQF requirements:

- Project Management Principles & Practices: 3 days.
- Project Management Principles & Practices + MS Project: 5 days.
- Programme in Project Management: 1-year Certificate.
- Advanced Programme in Project Management: 1-year Certificate.
- Custom, client specific, training programmes.

ADDITIONAL SERVICES (IN ASSOCIATION):

- Quantity Surveying
- Cost Engineering and Control
- Engineering Management
- Health, Safety and Environment Management
- Quality Management



OUR APPROACH TO PROJECTS

We continuously aim to improve the delivery of projects through the incorporation of lessons learned and the application of robust systems and process.

- Maintain **core team** of resources.
- Structure **project team** around **project and client needs**.
- Supplement resources with **selected skilled resources**.
- Focus on **Project, Engineering and Construction Project Management** (supported by sound engineering experience and qualifications).
- **Capital, Cost Saving** and **Business Improvement**.



While we maintain focus on the discipline of project management, our strong engineering profile adds significant value, as we assist in planning and interpretation of engineering solutions. We further collaborate with specialist design engineers and construction companies to provide EPC (turnkey) and EPCM (management) solutions to clients.

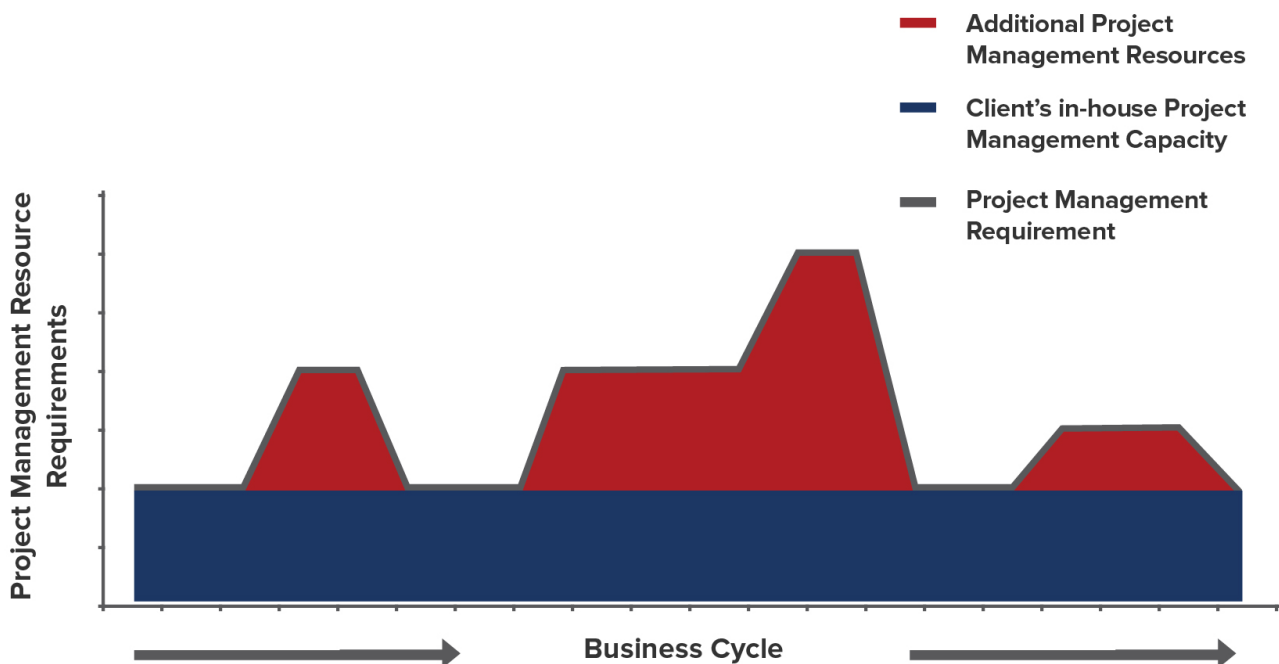
IT IS PROJECTWAY'S GOAL TO ACHIEVE THE FOLLOWING:

- The **correct scope** is implemented to address the need and address the project objectives.
- The client pays a fair price **for the implemented scope**.
- The product is delivered within the best **possible time period** to optimise **"time to market"**.
- The product meets the **user requirement specification** and the **technical standards set** by the professional team.
- A suitable **integrated project team** focusses on delivery of the product.
- Project risks are **continuously identified, assessed and managed**.
- The client and stakeholders are **suitably informed** of progress.
- Documentation is **managed and stored**.
- **Goods and services** are procured to meet time, cost and quality requirements.
- The above is integrated towards a **successful project**.

INTEGRATION WITH CLIENT ORGANISATION

Project management requirements vary between organisations and also within the same organisation over time. We have provided a project management service in a number of different circumstances.

A number of “non-projectised” organisations retain some project management capacity inhouse. However, as projects are not core business (production and service delivery usually being the focus), the need for project management varies throughout the business cycle. Projects (usually required to enable and sustain production or for strategic reasons) occur at random and requires short to medium term increase in project management capacity. In organisations such as these, ProjectWay provides project management to “smooth” out the peaks in project management capacity, as depicted in the figure below.



Start-up businesses may require the establishment of infrastructure or systems to enable the business to commence with operations. In such situations we develop feasibility studies and the required project plan to establish the infrastructure and/or systems. This is followed by the implementation of the project plan, which involves engineering, procurement, construction, commissioning and hand-over to operations.

Our project team structure is primarily determined by the client's in-house resources, which may in some cases be made available to the project. We consider an approach of "co-sourcing" to be the modern improvement to outsourcing and insourcing. This is an arrangement where resources and tools are made available to the project by the client.



CLIENT LIST:

ABSA

ANGLO AMERICAN

ARM

ARUP

BARLOWORLD

DAIMLER

DELOITTE

DENEL

ESKOM

EXXARO

GLENCORE

IDWALA

KUMBA IRON ORE

MDM ENGINEERING

MINTAILS LIMITED

MTN

MURRAY & ROBERTS

RIFT VALLEY CORPORATION

SASOL

SIEMENS

TCTA

UROLOGY HOSPITAL

PROJECTS

Our company's project management experience extends over a number of project types and industries, of which the most notable are listed below:

PROJECT	INDUSTRY	ROLE/TASK
Ventilation shaft & fan	Coal mining	Planning & Implementation
Open pit mine developments	Coal mining	Feasibility studies
Box cut development & fit-out for access to underground reserves	Coal mining	Feasibility study followed by Implementation
Box cut development & fit-out for access to underground reserves	Coal mining	Planning & Implementation
Redundant Shaft Sealing (30+)	Coal Mining	Planning & Implementation
Pension pay-out scheme	Social Sector	Planning & Implementation
Tailings disposal management (Conveyors & slurry plant)	Mining Process	Take-over, re-align & implement
Tailings recovery & beneficiation	Mining Process	Feasibility
Underground mine development	Coal mining	Feasibility
Bulk fuel & lubrication storage & management	Mining	Planning & Implementation
Water purification pilot plants	Water Purification	Planning & Implementation
Switch infrastructure & facilities for major cellular enterprise in Zambia	Telecommunication	Feasibility & Implementation
Project Management Methodology for a major cellular enterprise in Nigeria	Telecommunication	Methodology development & roll-out
Establishment of a major cellular enterprise in Iran	Telecommunication	Implementation planning
Addcar high wall mining	Coal mining	Feasibility, planning & Implementation
Establishment of a tea blending facility in Tanzania	Agricultural	Planning & Implementation

Environmental management, water management & clean-up projects	Mining	Planning & Implementation
Building infrastructure	Industrial	Planning & Implementation
Security installations	Industrial	Planning & Implementation
Time & Attendance systems	Industrial	Planning & Implementation
Logistics building (1)	Automotive	Project Management, Engineering Management, Cost Engineering, Quality Management, SHE Management
Project System Review	Construction	Project Governance & Assurance
Project Methodology Development	Lime mining	Project Governance & Assurance
Project Review	Lime mining	Project Governance & Assurance
Bodyshop Extension	Automotive	Project Management, Cost Engineering, Quality Management, SHE Management
Logistics building (2)	Automotive	Project Management, SHE, Engineering Management, Cost Engineering, Quality Management, SHE Management
Urology Hospital revamp & extension	Health care	Project Management
Sorter & Conveyor system	Automotive	Project Management, SHE, Engineering Management, Cost Engineering, Quality Management, SHE Management
Paintshop Extension	Automotive	Project Management, SHE, Engineering Management, Cost Engineering, Quality Management, SHE Management
Assembly Line Extension	Automotive	Project Management, Cost Engineering, Quality Management, SHE Management
Energy Centre & Infrastructure	Automotive	Project Management, Cost Engineering, Quality Management, SHE Management

POLICIES

QUALITY POLICY

ProjectWay will make quality a way of life. Quality is the result of good management and will be achieved by the way we get the right things done.

We believe there is always a better way to provide services to our clients and strive for continuous improvement. In rendering our services we will optimise resource utilisation and commit ourselves fully to the task at hand. We consider meeting client requirements as the minimum performance criteria and aim to surpass expectations.

SAFETY, HEALTH AND ENVIRONMENTAL POLICY

POLICY

ProjectWay is committed to a clean, safe and healthy environment for our employees, contractors, customers and the communities around us.

All employees and contractors forming part of the ProjectWay service, have a duty to prevent harm to themselves, to others and to the environment.

ProjectWay will comply with all the applicable legislation, regulations and customers' requirements as minimum benchmark for its Safety, Health and Environment (SHE) Policy.

ProjectWay will regularly review this policy, practices and performance to ensure ongoing improvements.



OUR TEAM & EXPERIENCE

Our team is flexible and able to adjust to clients' specific needs with respect to geography, internal processes and systems, as well as the availability of resources. The core team of project managers consists of graduate civil, mechanical and industrial engineers, with inhouse Cost Management, Quality Control and Administration Support complementing our service delivery.

We have been involved in projects of repetitive nature and are in a position to package total solutions in a Turnkey format for similar projects. This includes the sealing of redundant mine shafts, security installations, box cut developments, underground mine access, fuel and lubrication storage facilities, legacy rehabilitation, ventilation shafts, conveyor systems etc.



Although it is preferable for formal project management to be included as early as possible in the life cycle of a project and remain included until closure, we have with success completed stand-alone activities and phases in project life-cycles, such as feasibility studies (mine development, facilities relocation, minerals extraction), implementation planning (establishment of a cellular telephone enterprise in the Middle East), risk assessments (mine development in Africa) etc. Some of our most successful ventures have arisen from being appointed to perform project status audits on “in trouble” projects and the subsequent appointment to get the projects back on track towards completion. Although this is not “the ideal” type of project, we pride ourselves in the fact that we have the skills and tenacity to get involved and ensure eventual success.

CONTACT US

OUR OFFICE

POSTAL ADDRESS:

PO Box 13622
Hatfield
0028
Gauteng
South Africa

PHYSICAL ADDRESS:

Suite A10, 1st Floor
Building 88A
Tijgervallei Office Park
Pony Road
Tijgervallei
Pretoria, Gauteng
South Africa

Lat: -25.7853386

Long: 28.355471800000032

Tel/fax: **+27(0)12 809 1028**

Fax: **086 559 1370**

email: **info@projectway.co.za**

www.projectway.co.za

PROJECTWAY